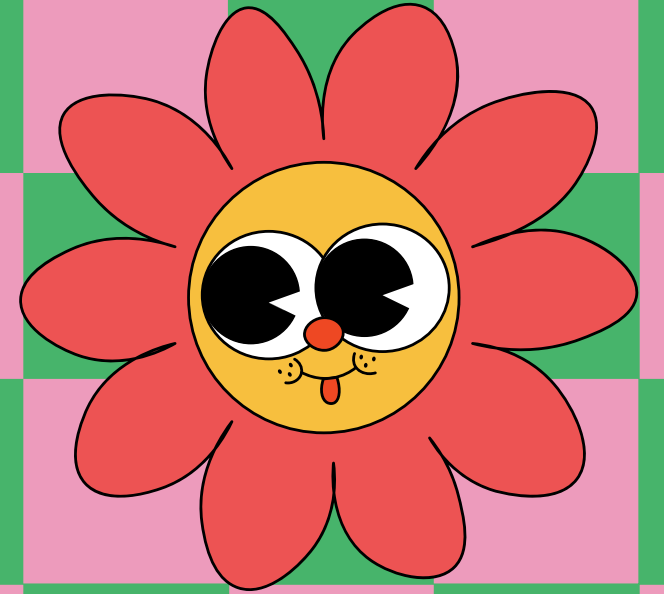
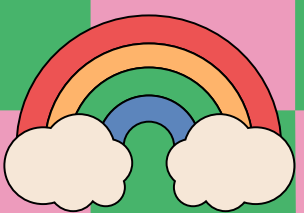


# PREP DISCOVERY TIME



## TERM 2 2026

The Prep students will continue to focus on developing social skills through dramatic play. They will also engage in construction activities using the play pod, providing opportunities to build teamwork, communication and problem solving skills. They will take part in play based learning to explore 'thinking with our eyes', learning to observe others and look for clues in their environment to understand what others may be thinking. Students will also learn the importance of staying with the group and allowing space so everyone feels safe and comfortable. Students will continue to develop their fine motor skills through a variety of activities designed to strengthen hand muscles and improve co-ordination.



Teacher: Jenny Farrelly

