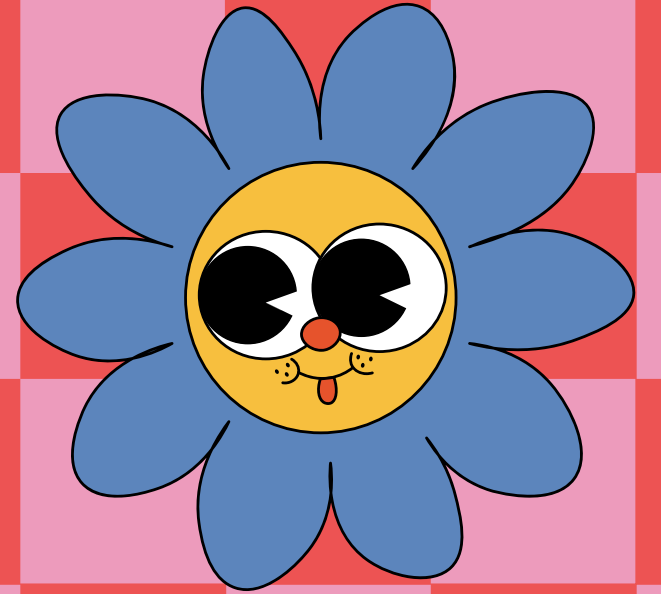


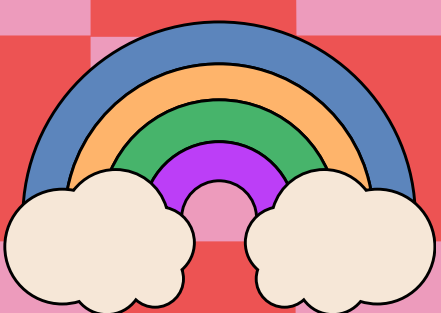
PREP DISCOVERY TIME



TERM 2 2025

During Prep Discovery Time sessions, the students will continue to focus on developing social skills through dramatic play. They will participate in play-based learning to explore 'thinking with our eyes' by observing others, by finding clues in our environment to see what they may be thinking, and the importance of 'keeping our body in the group' by allowing space for those around us to feel safe and comfortable.

The students will continue engaging in a variety of fine motor activities to strengthen their hand muscles and co-ordination. They will also be participating in construction activities using the play pod.



Teacher: Jenny Farrelly

