

AUSLAN TERM 2 OVERVIEW

Auslan Teacher - Violeta Young

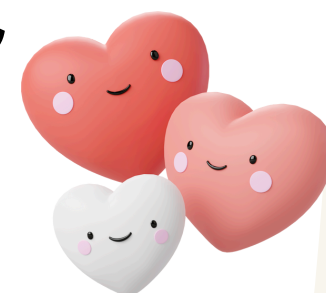


ABC ALPHABET



- Regular practise of expressive and receptive fingerspelling.
- Exploring when the alphabet is used.

FAMILY & HOME



- Connecting real life experiences into Auslan
- Building on vocabulary to enhance communication



FOOD

- Opportunities to have hands on experiences
- Mealtime discussions
- Storytelling and books

QUESTIONS & REVIEW



- Empowering conversations
- Students expressing curiosity
- Seeking information and clarity
- Brings the learning from the term together.

TRY YOUR BEST

Everyone's 'best' looks different – try your best!

HOW YOU CAN HELP AT HOME



- Check [Seesaw](#) to prompt a discussion about learning happening at school.
- Visit findsign.net to search for signs together.
- Encourage fingerspelling number plates and street signs when out.

